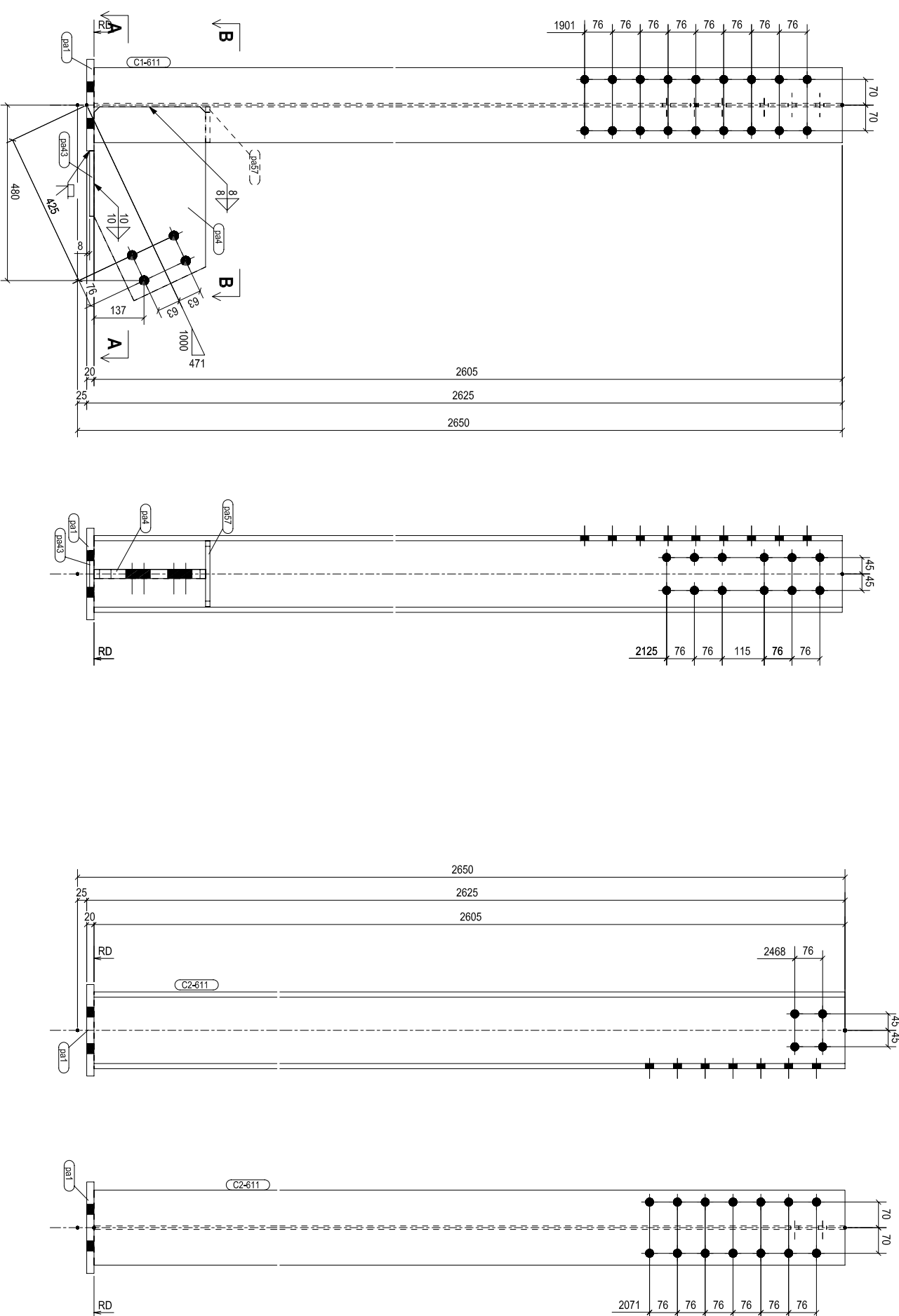




**BILL OF MATERIAL**

ADVANCE BILL MARK	QTY.	MARK	DESCRIPTION	LENGTH	AREA (m <sup>2</sup> )	TOTAL WEIGHT (kg)	MATERIAL	REMARKS
	2	C1-611-602	COLUMN		3.66	177.2		
	2	C1-611	UC200*59.5	2605.0	3.1	136.2	300PLUS	
	2	pa1	PLT20*250	250.00	0.14	9.8	250	
	2	pa4	PLT25*305	530.24	0.32	27.4	250	
	2	pa43	PLT12*127	179.00	0.05	2.1	250	
	2	pa57	PLT12*98	180.00	0.04	1.6	250	
	4	C2-611-602	COLUMN		3.24	146.0		
	4	C2-611	UC200*59.5	2605.0	3.1	136.2	300PLUS	
	4	pa1	PLT20*250	250.00	0.14	9.8	250	

BOLT QTY'S ARE FOR ONE ASSEMBLY ONLY (ALL SHOP BOLTS HAND TIGHT ONLY)  
 ASSEMBLY QTY WORKSHOP BOLTS LENGTH



2 - REQUIRED - MK\_C1-611 - 602

4 - REQUIRED - MK\_C2-611 - 602

